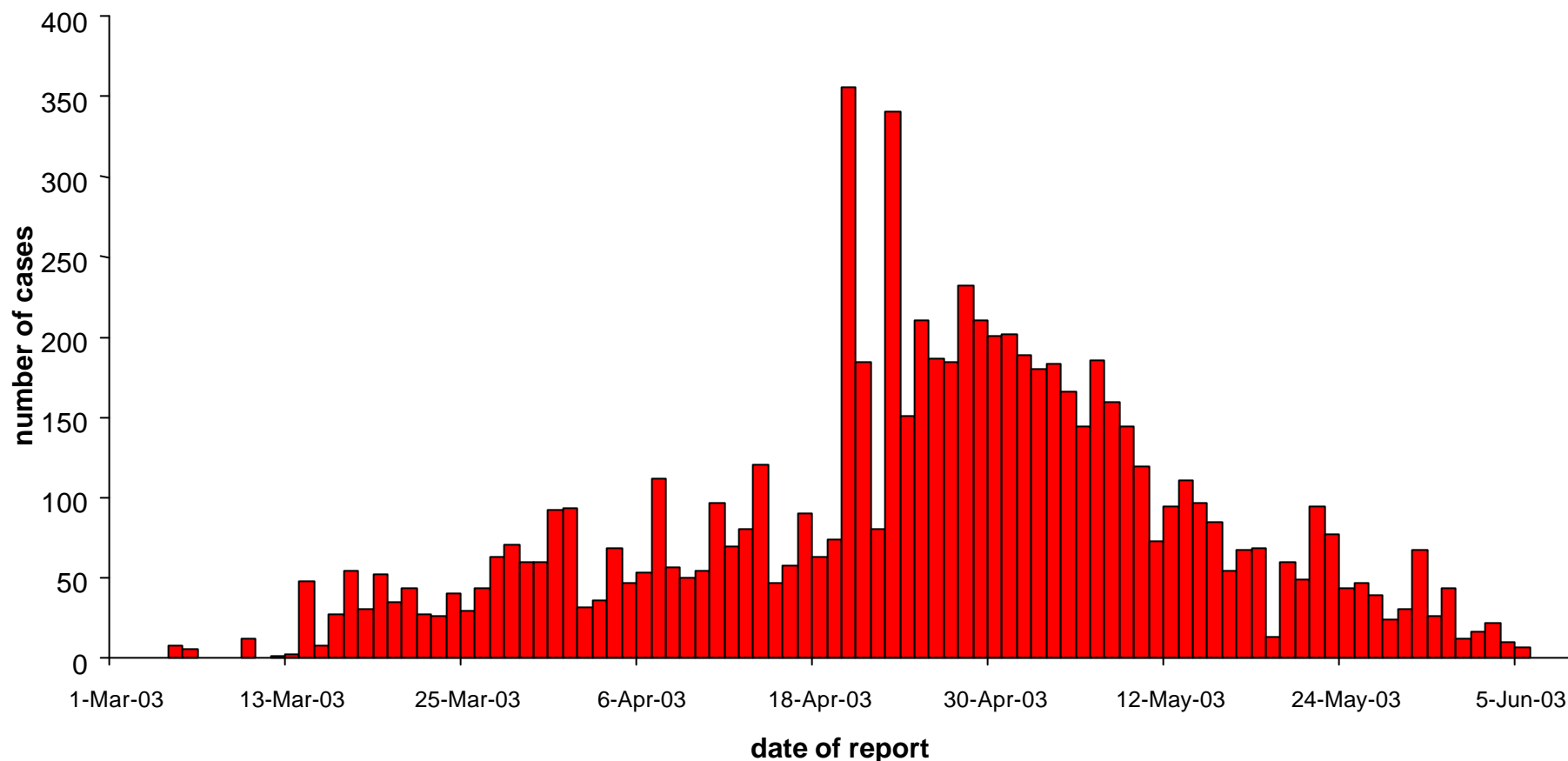


# Probable cases of SARS by date of report Worldwide\* (n=7,478) 1 March - 5 June 2003

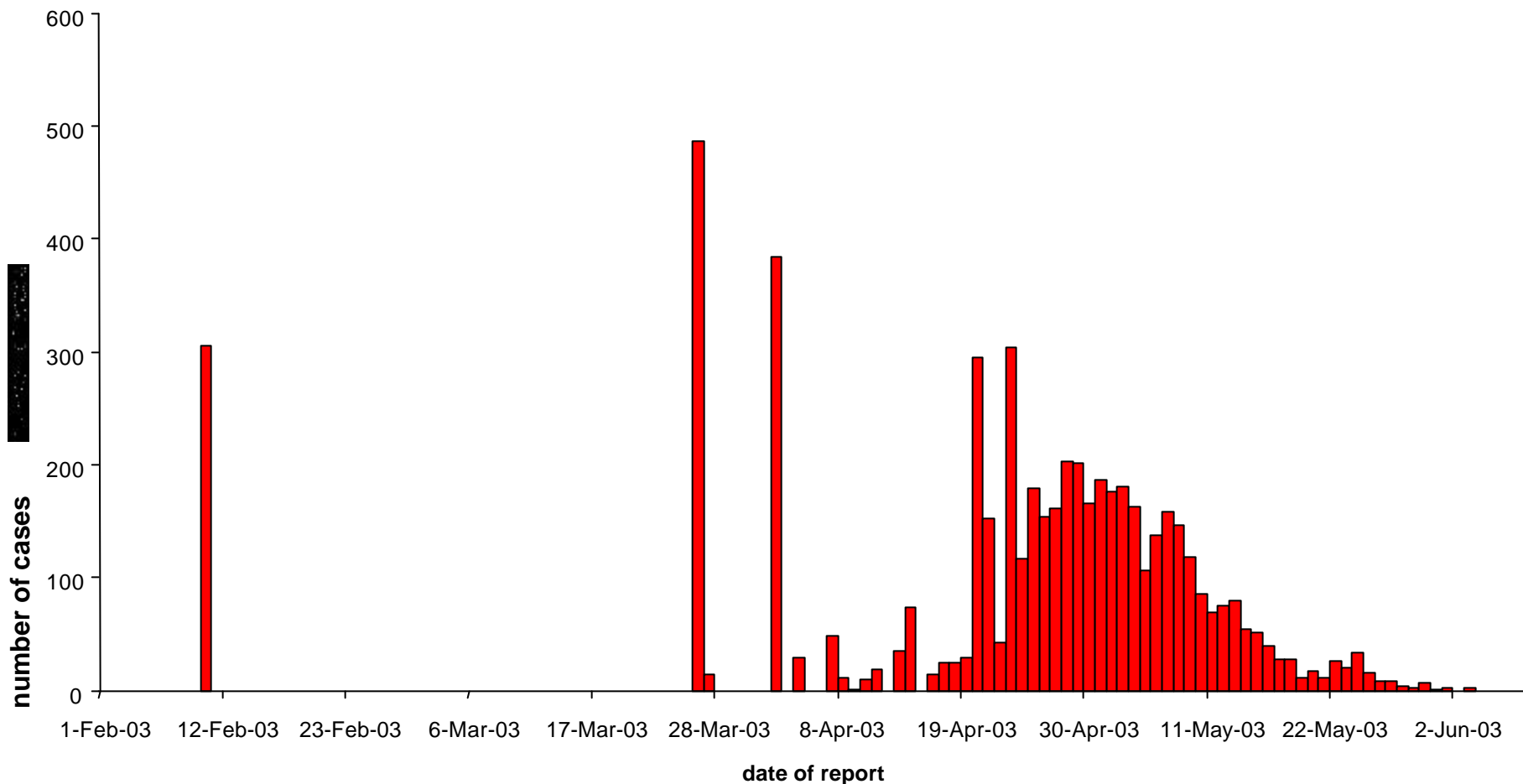


\* As of 5 June 2003, 8,403 probable cases of SARS have been reported to WHO.

This graph includes all cases from Hong Kong SAR, Macao SAR and Taiwan, China, but only those cases elsewhere in China reported after 3 April 2003 (1,190 cases between 16 November 2002 and 3 April 2003 not shown). Also includes 265 probable cases of SARS who have been discarded and for whom dates of report could not be identified.

The United States of America began reporting probable cases of SARS to WHO on 20 April 2003.

## Probable cases of SARS by date of report China, 1 February - 5 June 2003 (n=5,546\*)

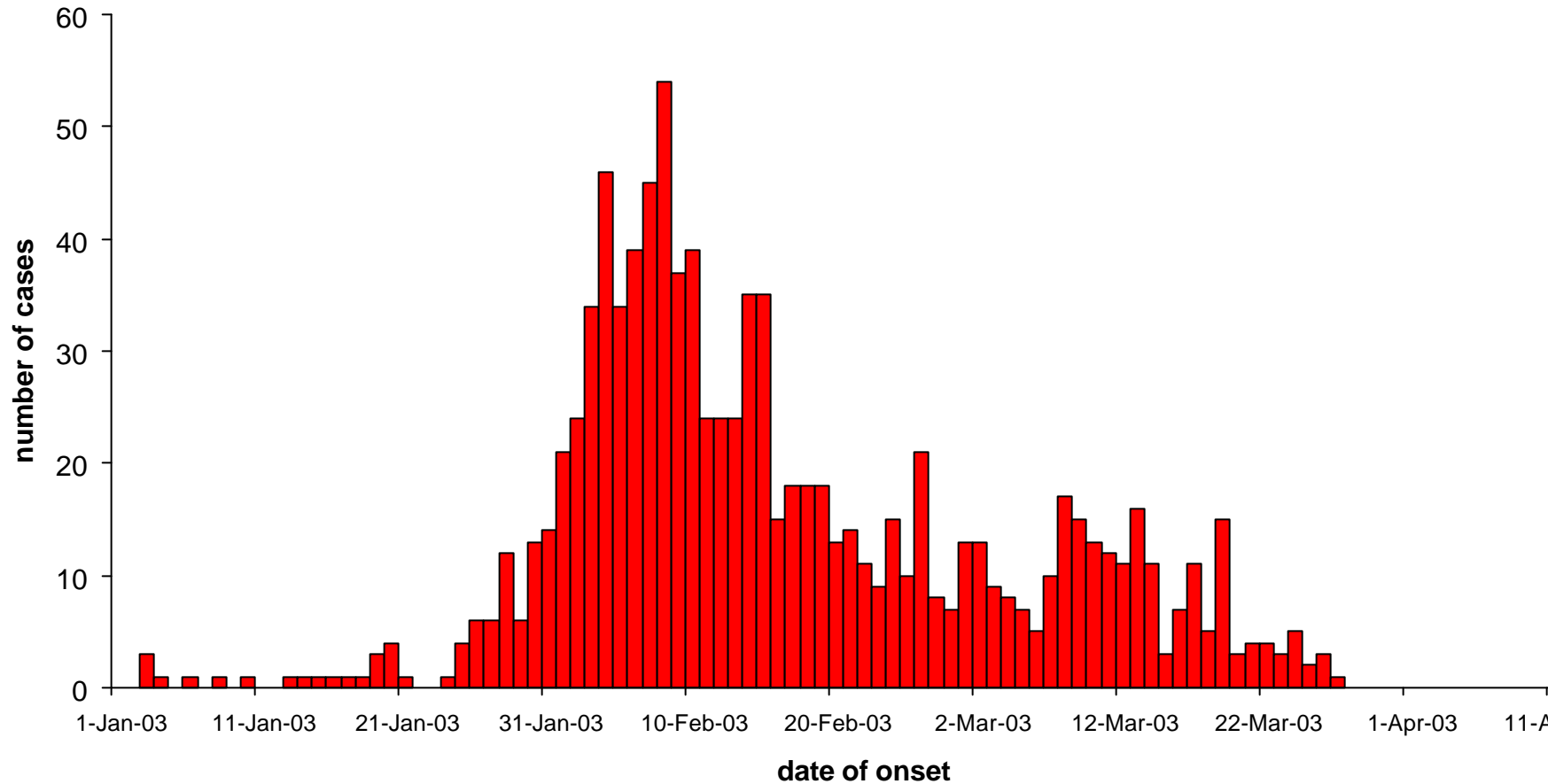


\* As of 5 June 2003, 5,329 probable cases of SARS have been reported from China.

This graph includes 217 probable cases of SARS who had been discarded and for whom dates of report could not be identified.

Source: Ministry of Health, China, WHO

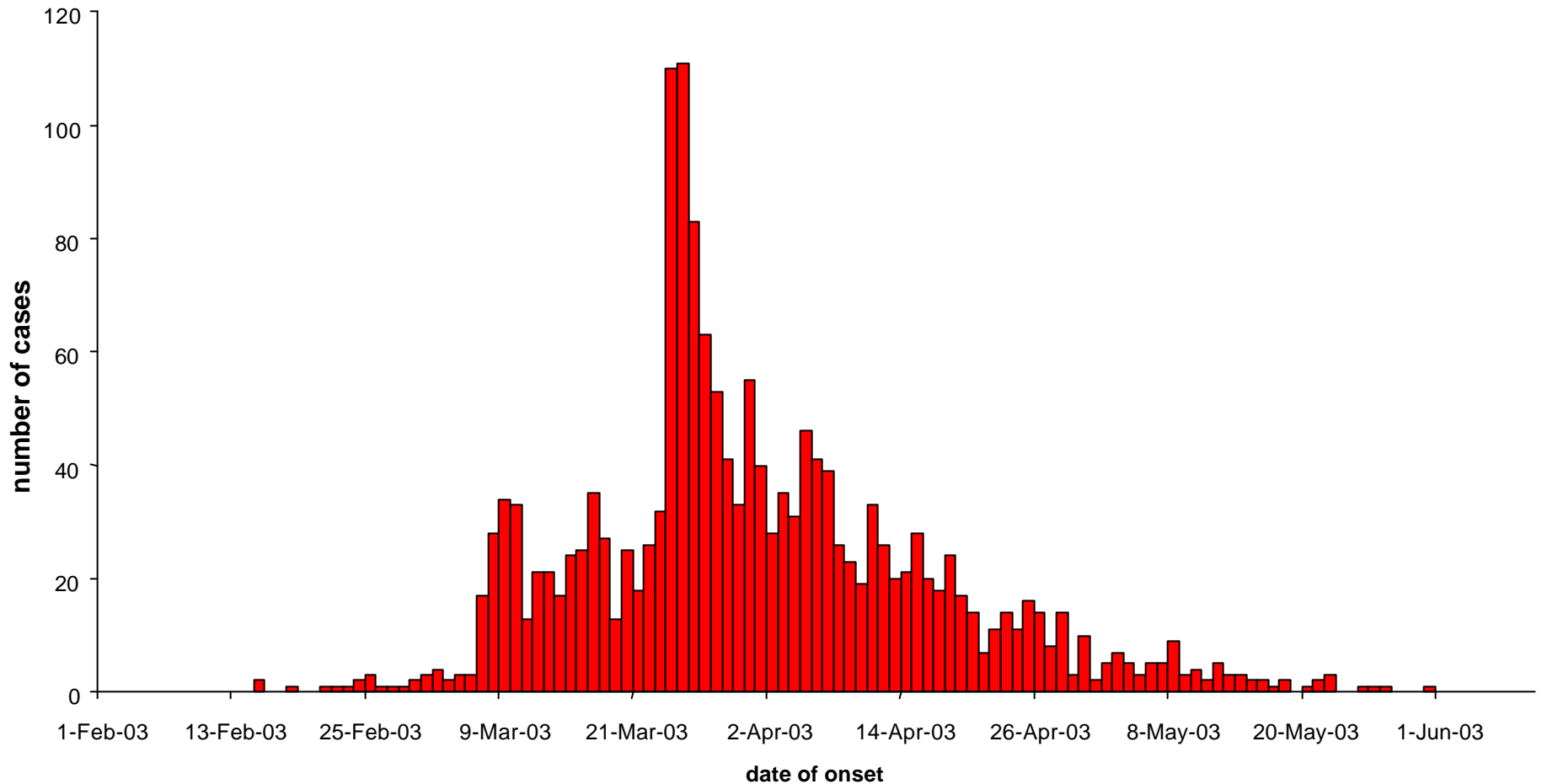
**Probable cases of SARS by date of onset**  
**Guangzhou City, Guangdong Province, China (n=1,001\*)**  
**1 January - 31 March 2003**



\* As of 5 June 2003, a total of 1,511 probable cases of SARS have been reported from Guangdong Province China.  
Source: Ministry of Health, China, WHO

# Probable cases of SARS by date of onset

## Hong Kong SAR, China, 1 February - 4 June 2003 (n=1,724\*)

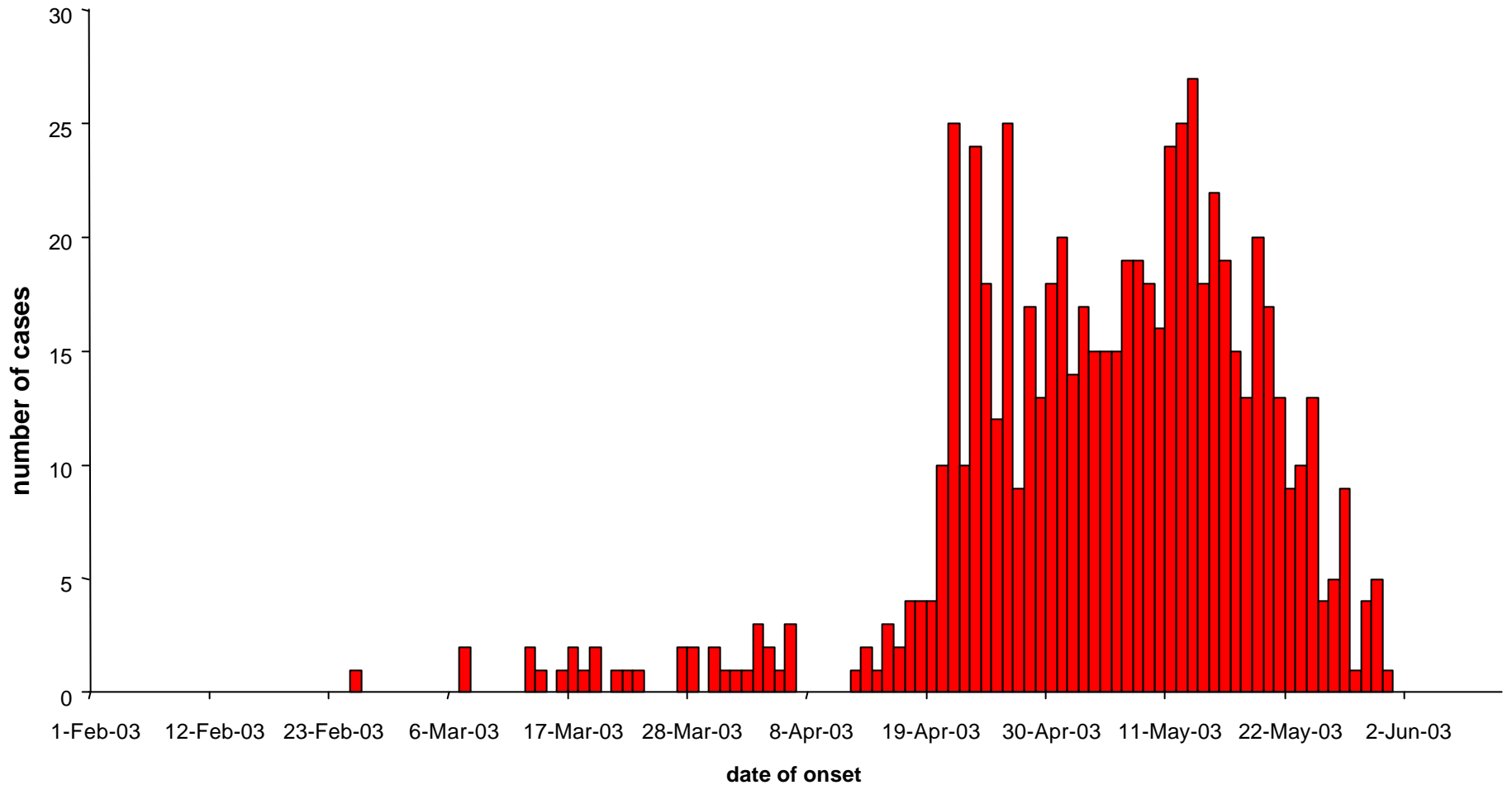


\* As of 5 June 2003, an additional 24 probable cases of SARS have been reported from Hong Kong SAR, China, for whom no dates of onset are available.

Source: Department of Health, Hong Kong Special Administrative Region of China

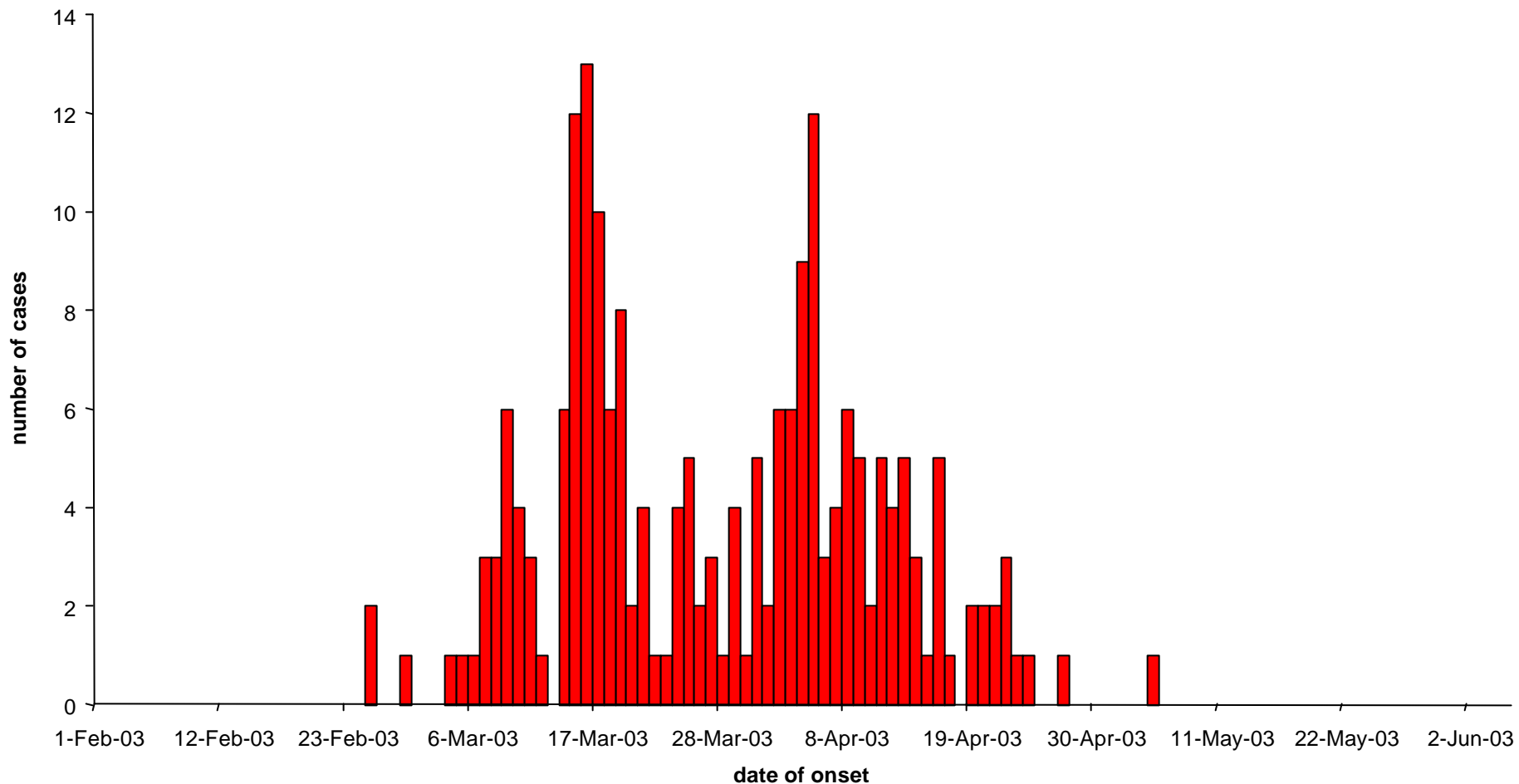
# Probable cases of SARS by date of onset

## Taiwan, China, 1 February - 5 June 2003 (n=677)



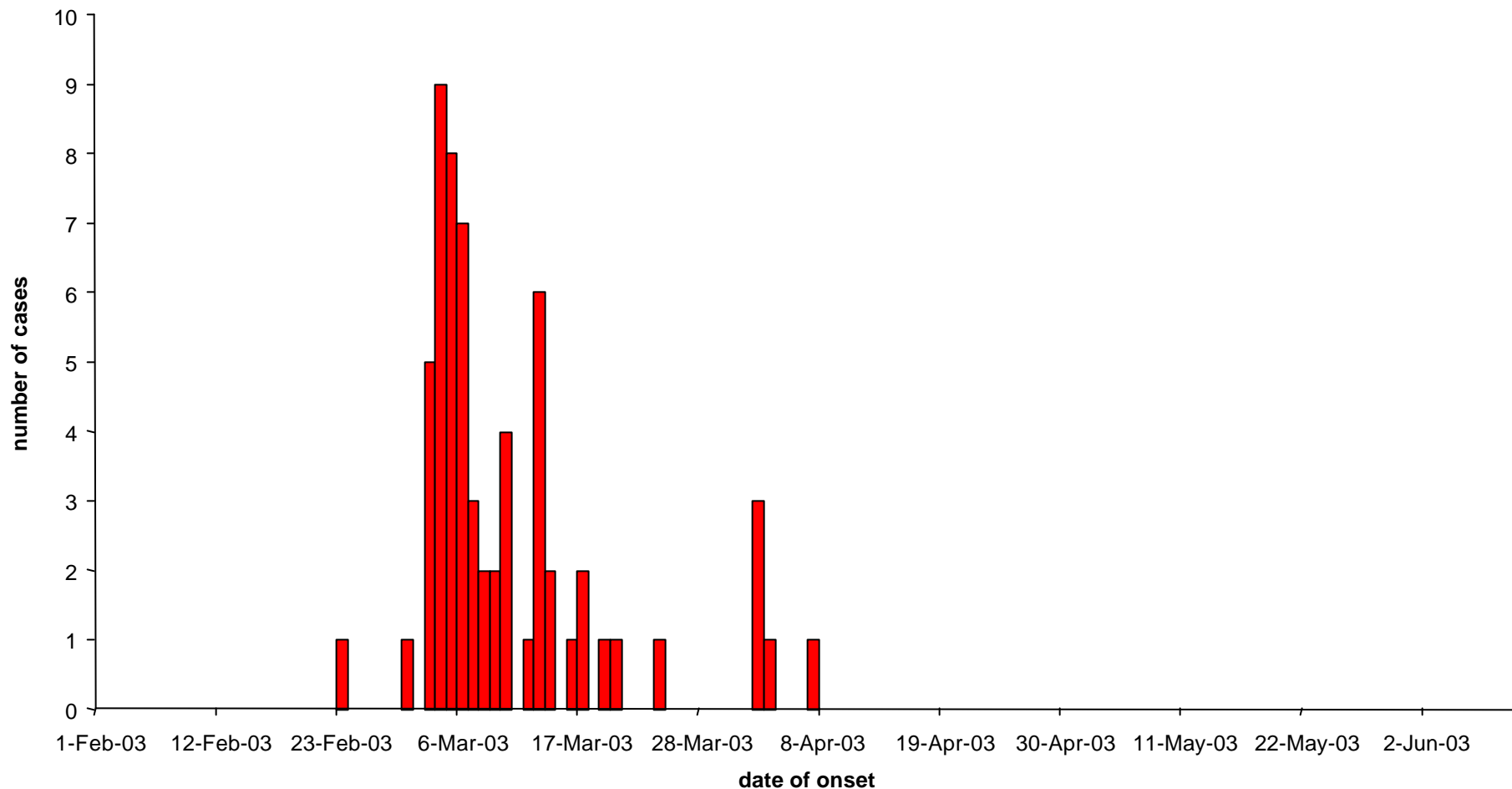
Source: CDC Taiwan, China, WHO

# Probable cases of SARS by date of onset Singapore, 1 February - 5 June 2003 (n=206)



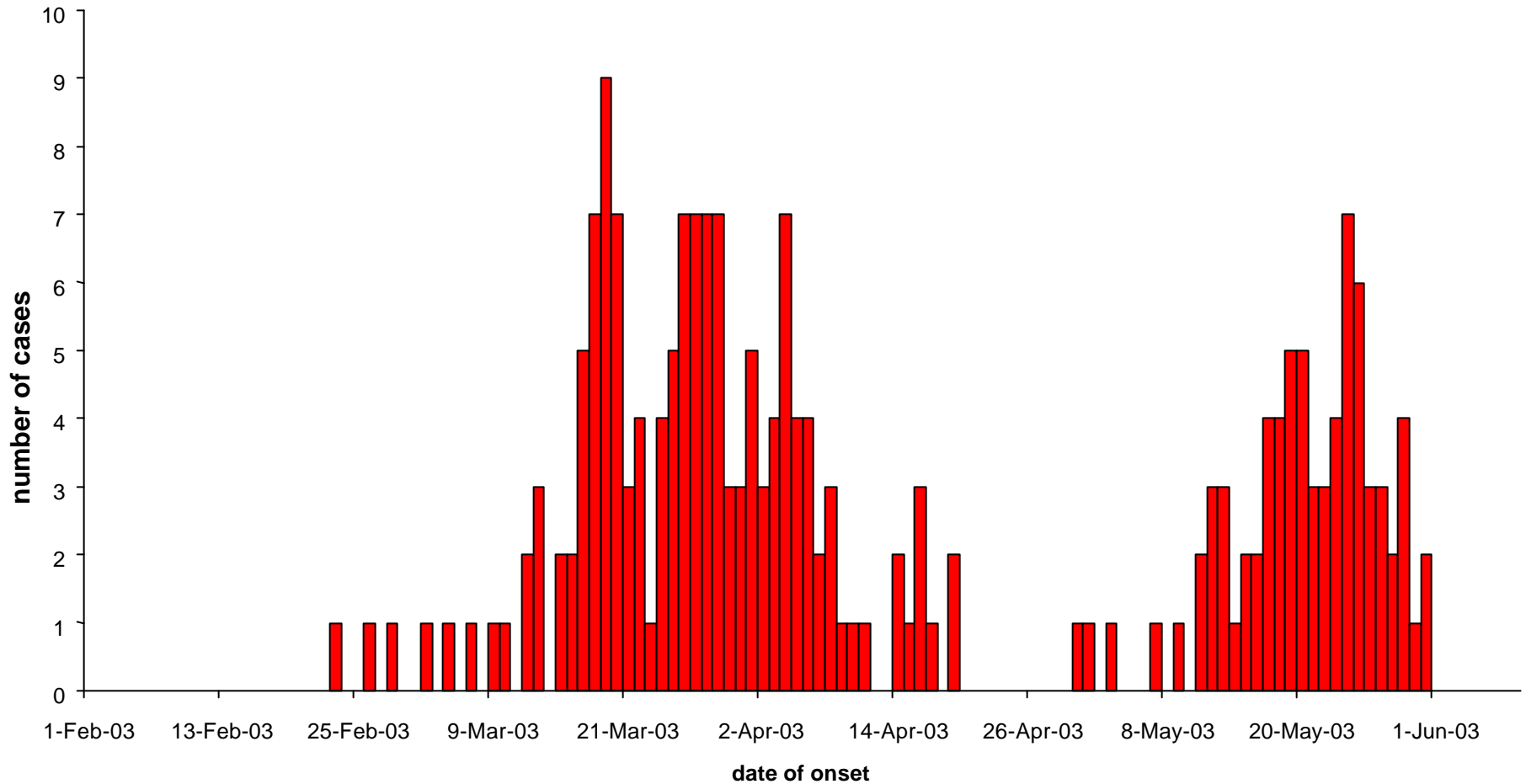
\* Source: Ministry of Health, Singapore, WHO

## Probable cases of SARS by date of onset Viet Nam, 1 February - 5 May 2003 (n=62\*)



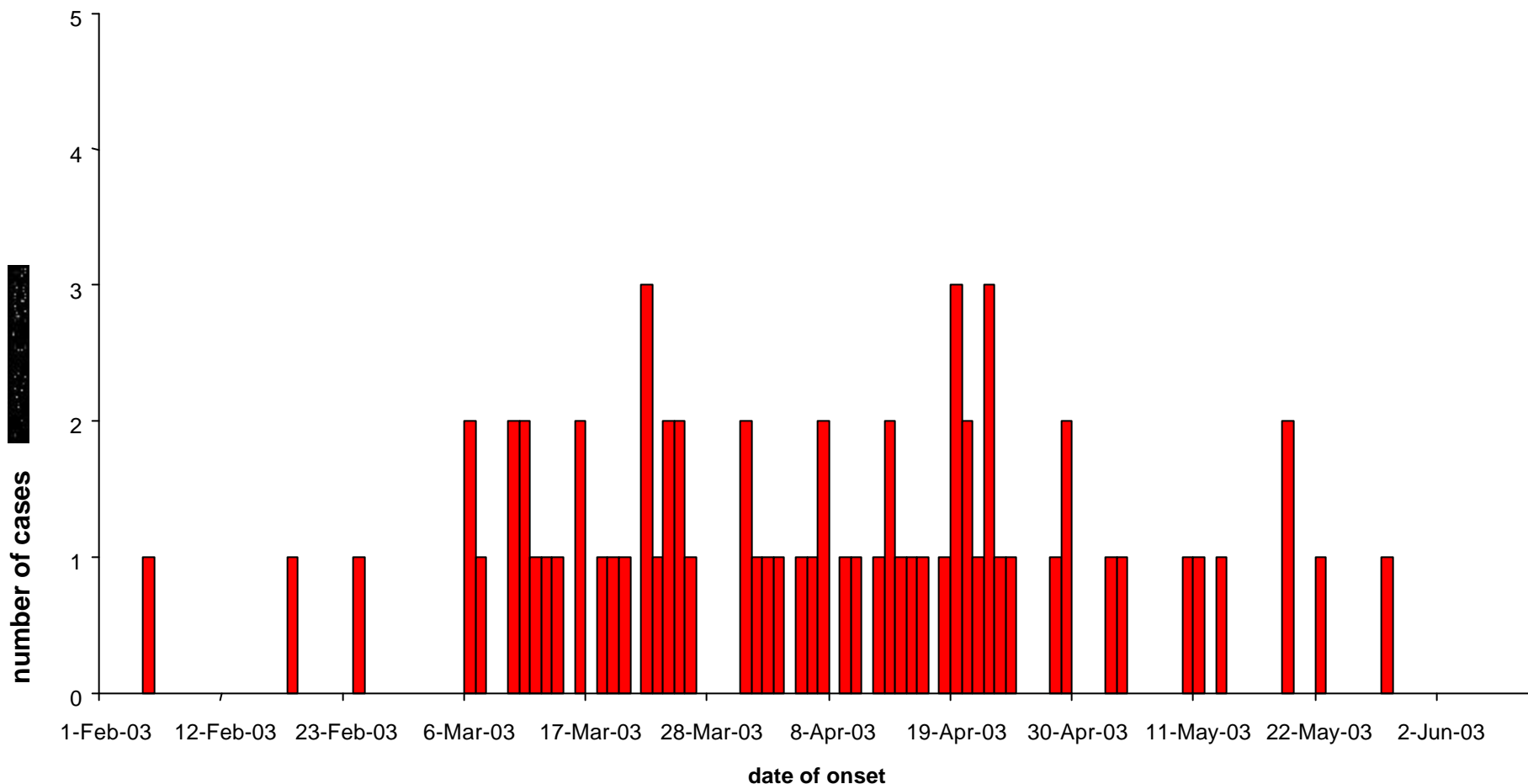
\* As of 5 June 2003 an additional probable case of SARS has been reported from Viet Nam for whom no date of onset is available.  
Source: Ministry of Health, Viet Nam, WHO

## Probable cases of SARS by date of onset Canada, 1 February - 4 June 2003 (n=214\*)



\* As of 5 June 2003, 4 additional probable cases of SARS have been reported from Canada for whom no dates of onset are available.  
Source: Health Canada

## Probable cases of SARS by date of onset United States of America, 1 February - 4 June 2003 (n=68\*)

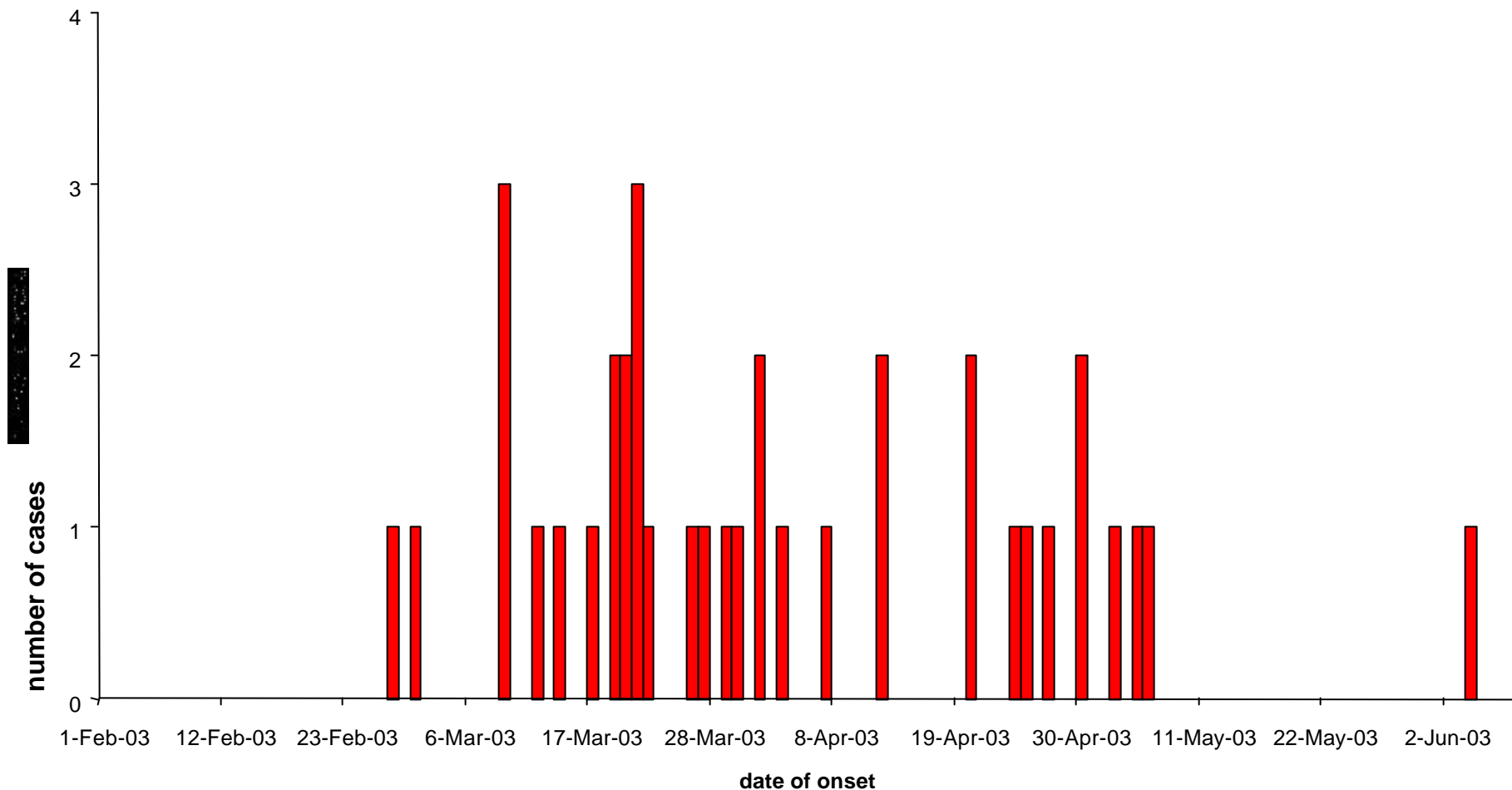


\* On 4 June 2003, dates of onset were available for 68 of 69 reported probable cases. On 5 June 2003, two probable cases of SARS were discarded, leaving a total of 67 probable cases.

Source: CDC United States of America

# Probable cases of SARS by date of onset

## WHO European Region, 1 February - 4 June 2003 (n=37\*)



\* As of 5 June 2003, an additional 2 probable cases of SARS have been reported from countries in the WHO European Region for whom no dates of onset are available.

Source: WHO EURO